


TRACKREPORT

TEST ANALYSIS & REPORT GENERATION SOFTWARE

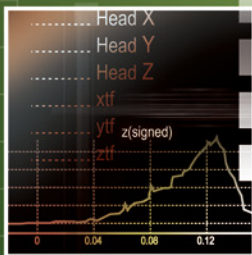
 ASAM Compliant

REPORT GENERATION

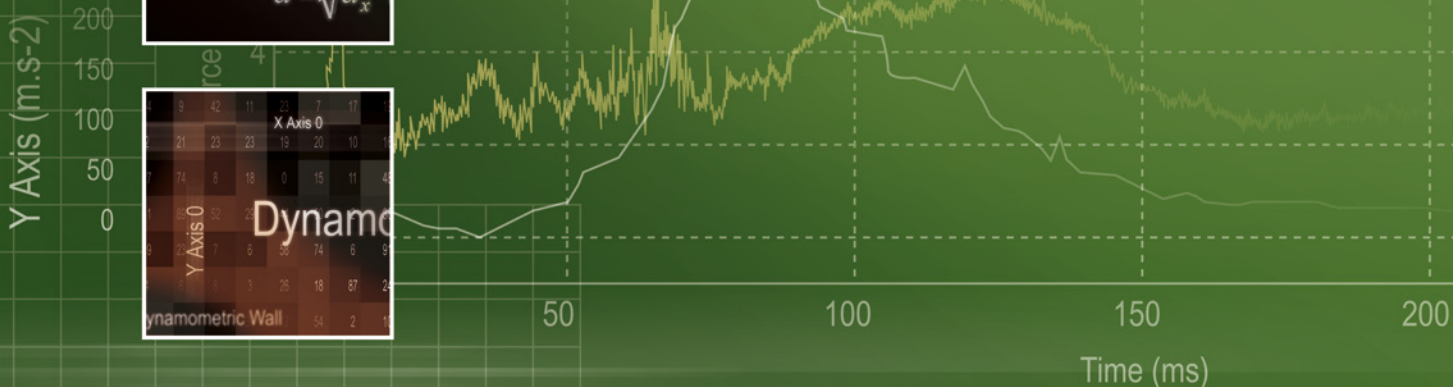
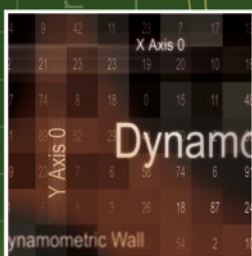
- Graphic design of test report templates
- Automatic channel assignment
- Curve and video synchronization
- Various exports (html, avi...)

ALGORITHM DEVELOPMENT

- Standard & specific calculation libraries
- Automotive biomechanical criteria
- Acoustic library

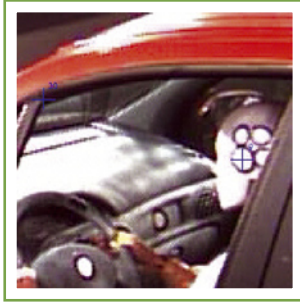


$$a = \sqrt{a_x^2 + a_y^2 + a_z^2}$$
$$HIC = \sup_{t_1, t_2} \left\{ \frac{1}{t_2 - t_1} \int_{t_1}^{t_2} a^2 dt \right\}$$
$$a = \sqrt{a_x^2 + a_y^2 + a_z^2}$$



ORME
Signals & Images

DATA ANALYSIS



TrackReport offers a full data visualization and analysis environment, where interactivity and automation help creating simulation or test reports. Configurable report templates handle data post-processing algorithms as well as the graphical setup. The development of these report templates is very intuitive and smooth, thanks to the various calculation libraries and a complete and dynamic graphical object suite: text areas, curves, tables, images, videos, color maps, bar charts, 3D-animations... The report templates thus enable the generation of an accurate data set analysis and the corresponding report.

Although being a standard and generic tool, TrackReport's architecture remains open, enabling the user to develop specific data import/export functions, or new calculation libraries. TrackReport is now widely used to analyze and compare test and simulations in various fields: automotive, aeronautics, space, cosmetics, energy, defense...

EASY TO USE

*Graphical setup of test report templates
Computer-aided algorithm development
Automated unit management*

INTERACTIVITY

*Interactive report templates through customized dialog boxes
Cursors, animations...*

AUTOMATION

*Automation of report edition tasks
TrackReport control and interactivity with other applications*

ANALYZE

*Superposition mode for data set comparison
3D visualization, synchronizations, and animated exports*

COMPATIBILITY

*Import of various data file formats
ASAM-ODS database connection*

OPENNESS

*Plug-in architecture for calculation and import/export functions
Software development kit for new functions*

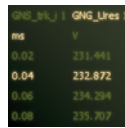
MODULES

TRACKREPORT STANDARD EDITION



Report template creation

- Graphical creation of test report templates
- Dynamic text areas, 2D-curves, bar charts, tables, color maps, images, videos, image sequences



Import of various data formats

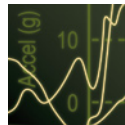
- Standard formats
- ASCII files reader wizard
- Specific imports plug-in

$$F = \sqrt{m \cdot a_x}$$

with:
 m Mass of the head
 a_x head acceleration
 F_x upper neck force

Calculation libraries

- Mathematics, statistics, interpolation...
- Dialog boxes definition
- Specific libraries plug-in



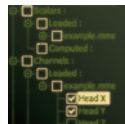
Automatic report generation

- Interactive analyses
- Animations, cursors
- Data synchronization
- Data set comparison/superposition



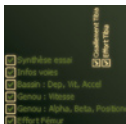
Automated unit management

- Smooth unit recognition, conversion and management
- Automatic learning of new units



Results and data exports

- Standard formats
- ASCII formats
- Specific exports plug-in



Report export

- Animated HTML reports
- Image exports
- Print...

```
function anim
C = curve + Erack
return (curve)
end
for i = 1, nbPo
t[i] = t1
a[i] = a1
end
```

User programming

- TrackL Language, Visual C++ SDK
- Tasks automation using Java Scripts



ASAM-ODS Client Module

- ASAM-ODS database connection
- Data import/export
- Advanced search



Crash-Tests Calculations Module

- CFC filters, biomechanical criteria (neck, head, chest, leg...)
- Restraint systems norms
- Regulation implementation



3D Module

- 3D graphical object
- VRML import / export
- Navigation and animations



Acoustic Calculations Module

- A, B, C weighting, narrow-band, octave or third-octave conversion, OASPL, PNL, TC...
- Regulation implementation

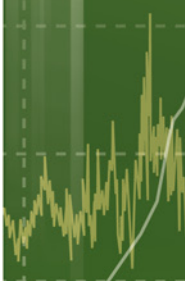
SERVICES

- Report template writing
- Report template maintenances
- Specific calculation libraries development
- Specific import/export formats development

TRAINING

- TrackReport standard use
- TrackL language development
- Java Script for TrackReport
- Visual C++ plug-in development

Y Axis (m.s-2)
200
150
100
50
0



Founded in 1996, ORME is your partner for the development of test analysis tools. To meet the increasing needs of the test field, on the one hand we develop a complete software product suite, and on the other hand we can offer custom-made software and hardware solutions, as well as test analysis service and consulting. We pay particular attention to keep a very close relationship with our customers, and remain attentive to their needs. Over twenty years of experience have enabled us to become a well-recognized and favored key contact of many key industrial companies.

SOME OF OUR CUSTOMERS:

ABB, Airbus, Airbus Defense & Space, Aptiv, ARAI, Autoliv, BMC, Boeing EnCore Interiors, Bosch, Brakes India, CEA, CED, CNES (CSG Kourou & Toulouse), DGA, Dongfeng-Peugeot, Dorel, EDF, Faurecia, FIA, Fujian-Benz, ICAT, IFSTTAR, Karma, Latécoère, Legrand, L3Harris, Leroy Somer, L'Oréal, Maruti Suzuki India, MGA Research, Martur, Nissan, ONERA, Peugeot-Citroën, Proma, RATP, Renault, SAFRAN (Aircraft Engines, Helicopter Engines, Landing Systems, Seats), Saint Gobain, Salomon, Schneider Electric, SERMA, STAC, Team-Tex, Thalès Alenia Space, Tisséo, Transpolis, Trelleborg, TSTech, UTAC, Valeo, Wabtec...



FRANCE - MAIN OFFICE

21 rue du Village d'Entreprises - Bât 7 - 31670 Labège
+33 5 61 00 25 70
www.orme.com - info@orme.com

AMERICAS - REPRESENTATIVE OFFICE

2 Bloor Street West - Suite 700, Toronto, ON M4W 3E2
+1 647 917-1711
arnaud.seigne@orme.com

BENELUX - SPAIN - PORTUGAL

IDT Europe bvba
Eekhoornstraat 22 - B-3920 Lommel, Belgium
+32 11 551065
www.idteurope.eu - info@idteurope.eu

CHINA

Shanghai EON Technologies Co., Ltd
Room 509, No.507 Gubei road, Shanghai, 200051
Phone: +86 21 61250527
Fax: +86 21 61250528
www.eontechsys.com - support@eontechsys.com

FINLAND

CHEOS
Sinimäentie 8B - 02630 Espoo
+358(0)20 1986464
www.cheos.fi - sales@cheos.fi

INDIA

Megatech Engineering & Services Pvt Ltd
A2/10 Tapovan, Dongre Park, Chembur, Mumbai 400074
Phone: +91-22-2553 6023; 2553 4471; 2553 7579
Fax: +91-22-2553 2317
megafive@vsnl.com

ITALY

HI-TEC
Via Agrigento 9 - Milano
+39 02 3271914
www.hi-tec.it - hi-tec@hi-tec.it

JAPAN

Marubun Corporation
8-1, Nihonbashi Odenmachi, Chuo-Ku, Tokyo 103-8577
+81 3 3639 9881
www.marubun.co.jp - takahiro_takahashi@marubun.co.jp

KOREA

JAT Co., Ltd.
#309 APEX CITY, 823 Dongtansunhwan-daero,
Hwaseong-si, Gyeonggi-do, 18471
Phone: +82 31 726 5033 - Fax: +82 31 726 5071
www.jatweb.co.kr - jat@jatweb.co.kr

SOUTH AFRICA

Horne Technologies cc
PO Box 536, Betty's Bay, 7141
+27.76.127.3796
www.hornetechnologies.co.za - david@hornet.co.za

UK

IDT (UK) Ltd
Eastway House - 7 Paynes Park - Hitchin - Herts - SG5 1EH
+44 1462 621124
www.idtvision.co.uk - info@idtvision.co.uk