

# SensiFLASH 1500

## High Intensity Illumination Flash System

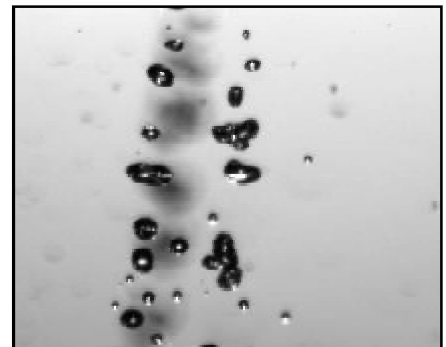
The SensiFLASH 1500 is used for imaging of high speed phenomena where a high intensity illumination flash system is required. Producing between 100-1500 joules of flash energy and a duration of 500  $\mu$ s - 8 ms, makes the SensiFLASH ideal for use with gated CCD cameras.

### SPECIFICATIONS

- Power:* • 100 - 1500 joules
- Duration:* • 500  $\mu$ s - 8 ms
- Strobe:* • 20 joule low speed strobe  
For camera system alignment and short duration analysis  
(in place of continuous lighting)
- Jitter:* • 30 - 50  $\mu$ s (depending on model)
- Rise Time:* • 50 - 500  $\mu$ s (depending on model)
- Flash Output:* • square wave
- Lamp:* • xenon - 5 mm point source  
or linear (depending on model)
- Light Delivery:* • 10 mm fiber optic  
(Two one meter lengths)  
• optional reflector output  
(Remote or Integral)
- Charge Time:* • up to 3 minutes  
(depending on model)
- Photocell Detection*
- Trigger:* • TTL 5 V Positive pulse output  
(triggering the SensiCam CCD Camera)
- Trigger:* • TTL to 10 volts - square wave
- Power Supply:* • universal (85 -260 VAC, 3 amps)
- Spectral Peak:* • 500 nm
- Dimensions:* • 300 mm X 264 mm X 400 mm
- Weight:* • 15 kg - 25 kg
- Applications:* • golf, spray, droplet and ballistics



**Golf Ball Dynamics:** 5  $\mu$ s exposure, 750  $\mu$ s delay and 8 ms duration xenon flash



**Oil Droplets:** 800 ns exposure, 4  $\mu$ s delay, 2 mm field-of-view

### ORDERING INFORMATION

SensiFLASH 1500 comes complete with SensiFLASH unit, lamp, coaxial cable and 110 VAC line cord.

The  
**Cooke**  
Corporation

1091 Centre Road, Suite 100  
Auburn Hills, MI 48326-2670

Tel. (248) 276-8820 Fax (248) 276-8825  
Email sales@cookecorp.com  
Website www.cookecorp.com