

# Rental Program

## Photron FASTCAM SA Series Quick Start Guide

(SA1, SA2, SA4, SA5, SA-X2, SAZ)

### High Speed Camera Components:



Camera Body



AC Power Supply



Multi-Wire Pigtail  
Input/ Output Cable



Trigger Cable



Ethernet Cable

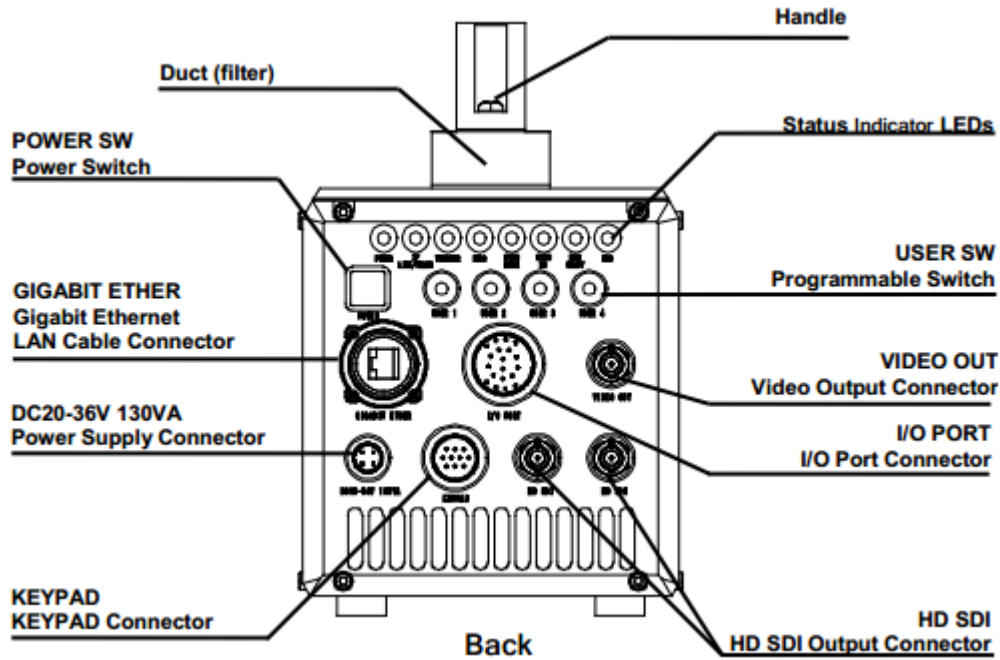


C-Mount Plate

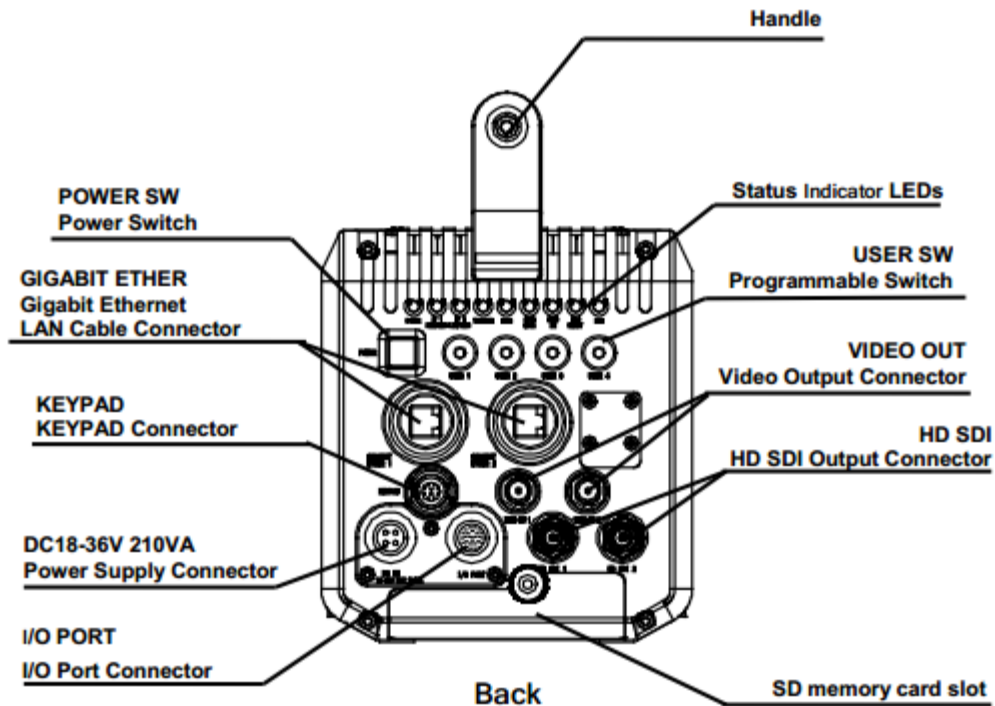


17338 Westfield Park Road, Suite #4 Westfield, IN 46074  
(317)849-3638 [sales@highspeedimaging.com](mailto:sales@highspeedimaging.com) [www.highspeedimaging.com](http://www.highspeedimaging.com)

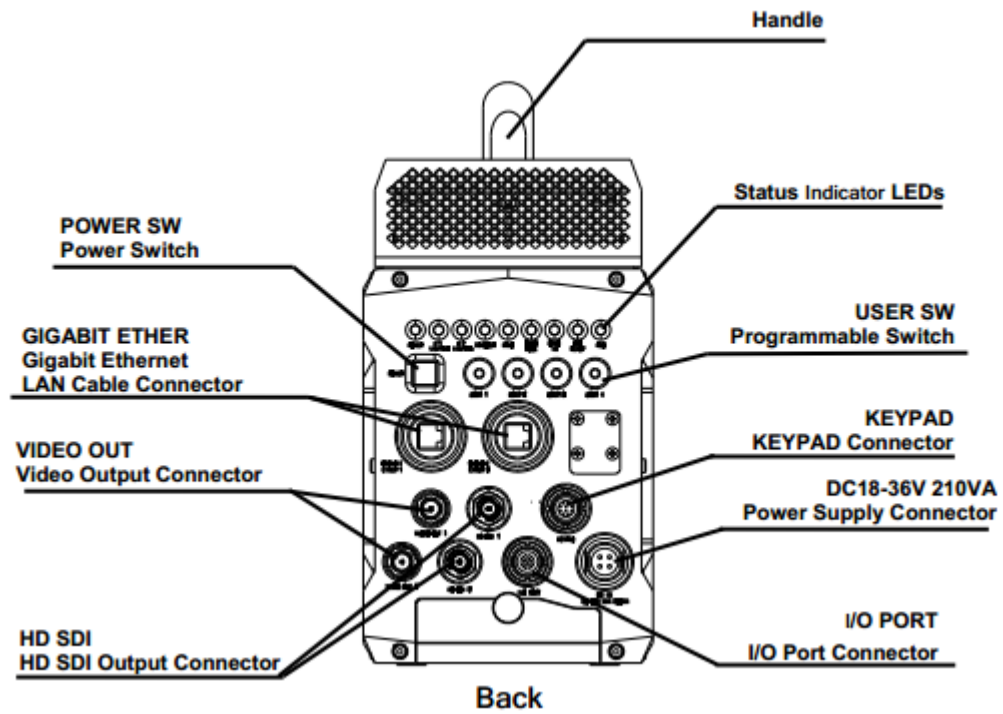
## SA1, SA2, SA4 and SA5 Models:




## SA-X2 Model:




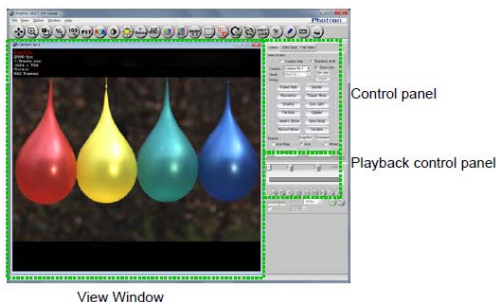
# SA-Z Model:



## Instructions:

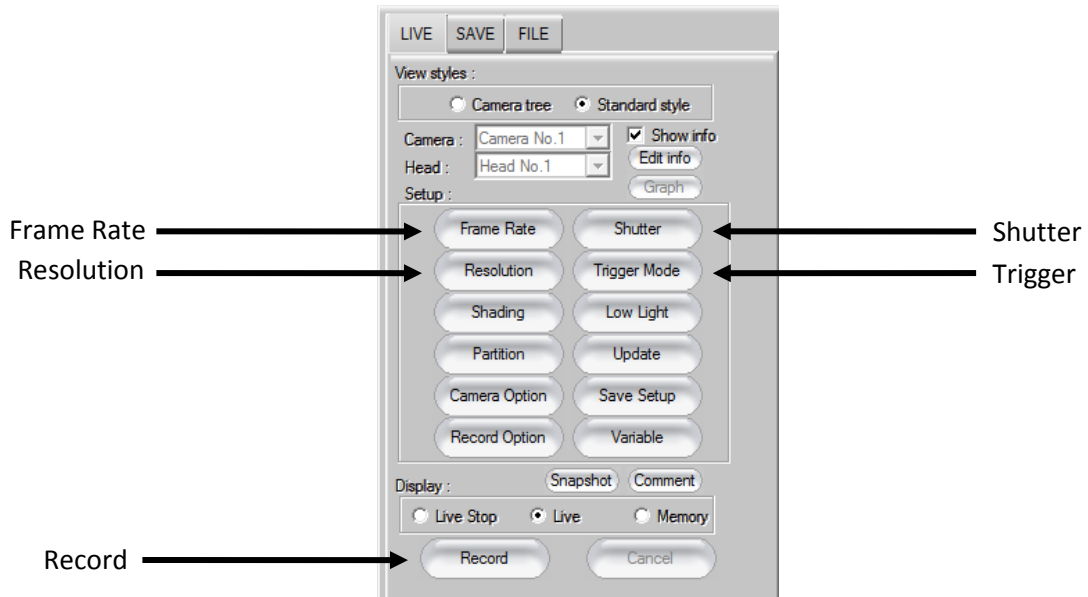
1. Connect the power supply to the back of the camera body.
2. Connect the Ethernet cable between the laptop and back of the camera body.
3. (Optional) Connect the multi-wire pigtail to the I/O Port on the back of the camera body.
4. (Optional) Connect the red trigger cable to the “Trig SW In” connector located on the multi-wire I/O pigtail.
5. (Not in all rental cases) If you wish to use the remote keypad, connect it now. When operating in computer control mode, having the keypad connected can “confuse” the camera. If this happens, select the “update” button on the Photron PFV camera control panel located on the right side of the screen.
6. Connect the laptop power supply and then turn on the laptop.
7. Use “pci” as the username and “pci” as the password.
8. Press the power button located on the camera body.
9. Wait for the camera to connect to the laptop.
  - a. Note: This can take up to 2 minutes. You will know the camera and laptop are connected when you see the network icon on the taskbar change to a yellow exclamation point 

10. After the camera is connected, double click on the Photron PFV icon 
11. Attach the desired lens to the camera body. Nikon F Mount lenses connect directly to the camera. C-Mount lenses require you to attach the C-Mount plate to the camera body before attaching lens.
12. Once the software has loaded it will display a live image.



View Window

13. Select desired Frame Rate, Resolution, Shutter Speed, and Trigger Mode.



14. To make a recording select the “Record” icon located on the bottom of the toolbar shown above.

Start Trigger = “Trigger In”

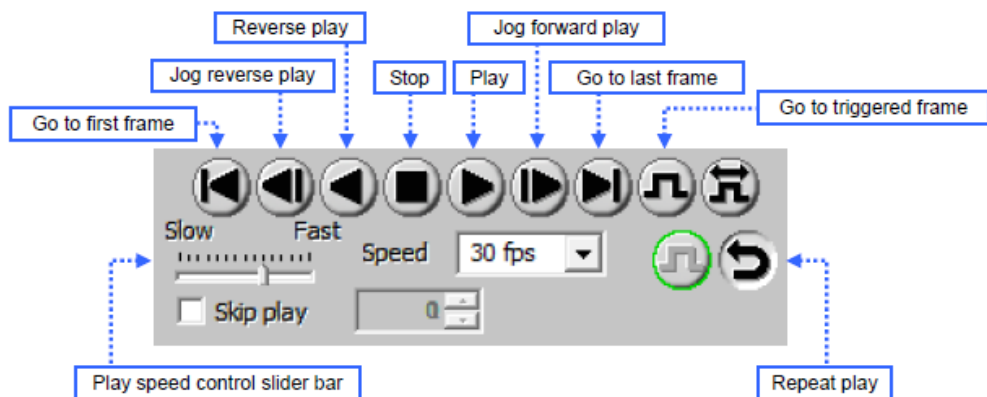
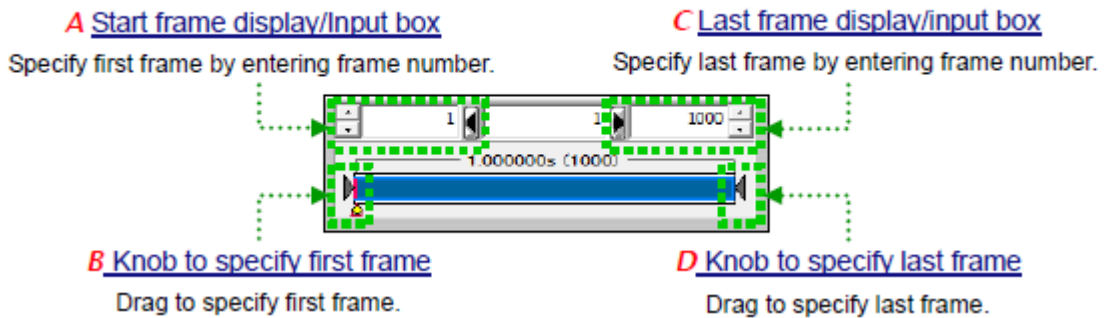
Center, End, Manual = “Endless Record”

15. There are several Trigger Modes, but the START, CENTER, and END are the most common.

- a. **START:** When a trigger signal is received, a start trigger command will start filling the memory buffer with images, until it is full. All the images in the buffer will have occurred after the trigger signal was received.
- b. **END:** An end trigger command will stop filling the memory buffer with images, after it is full. All the images in the buffer will have occurred before the trigger signal was received.

- c. **CENTER:** When the trigger command is received, the memory buffer will continue to fill to the 50% level and then stop. Half of the images will have occurred before receiving the trigger signal and the other half will have occur after receiving the trigger signal.
16. After making a recording, use the left arrow or pink bar to navigate to the first frame of interest within the recording. Then, either drag the pink scroll bar or use the other arrow to navigate to the last frame of interest. The solid blue bar indicates those images will be viewed/saved. You may also manually enter the frames you would like to save from the number boxes located above the blue bar.

Playback control panel (upper portion)



17. To save the video, use the “SAVE” tab located on the top of the right tool bar.

