

FASTEC IL3

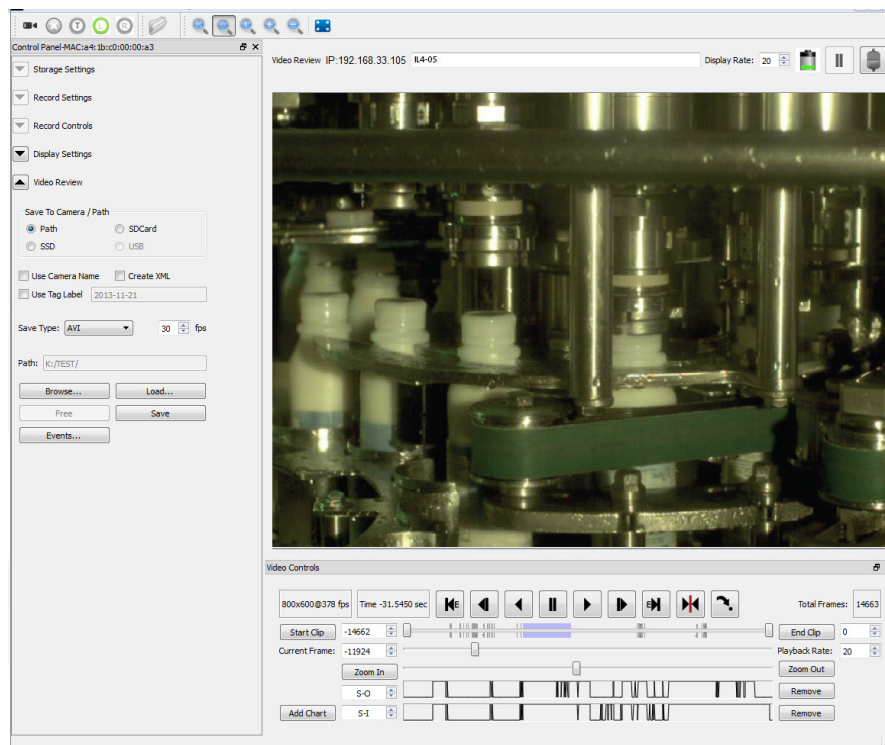


IL3 At A Glance

- 1280 x 1024 at 510 fps CMOS sensor
- Multiple removable image storage options
- Up to 1TB of onboard image storage
- Camera control via built-in web interface or FasMotion PC application

Key Features

- **High-Resolution, High-Speed Images** – The IL3 records ultra-sharp 1280 x 1024 mono or vivid color images at over 500 frames per second. With recording rates in excess of 60,000 frames per second at reduced resolutions, almost no event is too fast for the IL3-S. The economical IL3-L records at a maximum resolution of 800 x 600 and frame rates up to 1250 fps.
- **Flexible Control** - The IL3 can be set up over Gigabit Ethernet via Fastec FasMotion software on your PC or Mac, or via the built-in web interface with your favorite web browser on your PC, Mac, tablet, or even your smartphone.
- **FasFire Mode** – Ultra-fast save times to an SSD or SD card **while recording** high-speed bursts of hundreds or even thousands of images at a time, the IL3 is always ready for the next high-speed snapshot!
- **Multiple Storage Options** – The IL3 features both a USB port and an SD port for quick and easy image downloads to USB flash drives, SD cards, or portable hard drives. An optional built-in SSD (solid state drive) provides up to 1 terabyte (TB) of lightning-fast non-volatile internal storage. Shoot all day long without having to download to a computer.
- **High-Performance Image Transfer** – With download rates exceeding 10GB per minute to the optional internal SSD, or just seconds for short clips, you will always be ready to take the next shot with the IL3! The FasMotion application makes workflow a breeze with transfers of uncompressed images via Gigabit Ethernet at rates of 50–80MB/sec to moderately equipped PCs.



Fastec IL3 Specifications

Standard Features

Sensor	10-bit CMOS sensor with 14µm square pixels, color or monochrome
Resolution	1280 x 1024 pixels maximum (IL3-S), 800 x 600 maximum (IL3-L)
Light Sensitivity	3,200 ISO monochrome, 1,600 ISO color
Record Rate	24 to over 60,000 fps (IL3-S), 24 to 1250 fps (IL3-L)
Shutter	Global electronic shutter from 2µsec to 41.667ms
Image Memory	4GB. Optional upgrade to 8GB
Removable Storage	SD card (SDHC: 32GB maximum), USB Flash drive
Session Length	256MB up to full image memory
File Formats	Stacks – BMP, DNG, JPEG, TIFF (processed or raw); Video – AVI, CAP (raw)
Still Image Format	JPEG
Lens Mount	C-Mount (standard), F-Mount or PL-Mount (optional)
PC Communication Ports	USB 2.0 device (Micro-B), Ethernet (10/100/1000Base-T)
Control Software	FasMotion (PC/Mac application), web interface (browser on all platforms)
Six External I/O Ports	Markers, Trigger In/Out, Sync In/Out, Arm In/Out (LVTTTL (3.3V) or switch closure)
Marker Data Views	Camera display info line, playback timeline, FasMotion o-scope mode, XML file
Video Out	HDMI (1080p/60, 1080p/30, 720p/60)
Construction	Anodized machined aluminum housing
Power	10-26VDC external power supply
Power Consumption	20W maximum
Operating Environment	+5°C to +50°C
Size and Weight	185mm (7.25") W x 112mm (4.4") H x 45.5mm (1.8") D. 1Kg (2.2 lbs.)

Optional Features

WiFi	802.11 b/g/n, security: open, WEP, WPA(2) - PSK
Image Memory	Upgrade to 8GB total
Built-In Storage	Solid State Drive (SSD) 256GB, 512GB, 1TB
Lens Mounts	F-Mount, PL-Mount

Sample Resolutions and Record Rates

IL3100-S			IL3100-L		
Resolution	Frame Rate	Time	Resolution	Frame Rate	Time
1280 x 1024	125fps	52.2sec	800 x 600	125fps	142.4sec
1280 x 1024	250fps	26.0sec	800 x 600	250fps	71.2sec
1280 x 1024	510fps (Max)	12.8sec	800 x 600	500fps	35.6sec
1280 x 720	725fps	12.8sec	800 x 600	1000fps	17.8sec
800 x 600	1250fps	14.2sec	800 x 600	1250fps (Max)	14.2sec
640 x 480	1950fps	14.3sec	640 x 480	125fps	222.6sec
512 x 512	2150fps	15.0sec	640 x 480	250fps	111.3sec
416 x 312	4000fps	17.5sec	640 x 480	500fps	55.7sec
366 x 274	5000fps	17.0sec	640 x 480	1000fps	27.8sec
228 x 170	10000fps	22.0sec	640 x 480	1250fps (Max)	22.3sec
162 x 102	20000fps	25.5sec	256 x 256	250fps	521.1sec

All Specifications subject to change. All record times assume 8-bit data and 8GB memory.

Fastec Imaging
17150 Via Del Campo, Ste. 301
San Diego, CA 92127 USA
1.858.592.2342