

# HiSpec Lite Innovative Low-Light High-Speed Camera

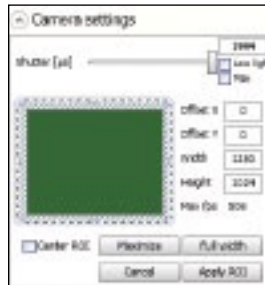


## Fast Facts

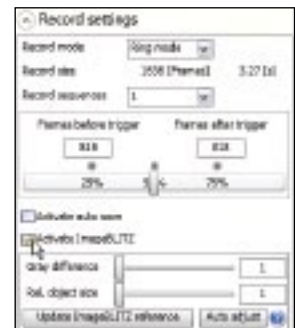
- **Excellent Light Sensitivity:** 3,200 ISO monochrome, 1,600 ISO color
- **Outstanding Image Quality:** Up to 1000 frames per second at 704 x 528 resolution
- **Well Connected:** GiGE compatible for easy remote camera control
- **Fits Anywhere:** Only 63mm H x 63mm W x 65mm D and .28 kg
- **GiGE Vision:** Industry standard control interface



Easy to use  
FASTEC Director 2  
Software



Optional Image-  
BLITZ® Auto  
Trigger feature  
based on selectable  
region of interest



## Key Features

- **Forget About Bright Lights** – Until now, lighting has sometimes been a challenge with high-speed imaging. No more! The photo-sensitivity of the HiSpec Lite enables high speed recordings at VGA resolutions under normal lighting conditions.
- **Use it Everywhere** – The HiSpec Lite Gigabit Ethernet interface allows the user to operate multiple cameras from any standard Notebook / PC up to a distance of 100 meters. The HiSpec Lite is designed for easy operation in virtually any industrial or laboratory environment.

See what you've been missing

# Fastec HiSpec Lite

## Camera Specifications

### Standard Features

#### System Design

Scaleable and network-compatible with standard and/or notebook PCs  
Synchronous processing of multiple cameras

#### Sensor

CMOS sensor, 704 x 528 pixels, 10-bit monochrome or RGB color with BAYER filter  
Active pixel area 12.3mm diagonal

#### Pixel Size

14 x 14  $\mu$ m

#### Light Sensitivity

3,200 ISO monochrome, 1,600 ISO color

#### Spectral Bandwidth

400 - 900 nm

#### Record Rate

Up to 1000 fps at full resolution

#### Image Memory

2GB, Optional upgrade to 4GB.

#### Recording Time

5.8 seconds at full resolution

Longer record times with variable resolution and frame rates

#### Shutter

Global electronic shutter from 2 $\mu$ sec to 1second

#### Lens Mount

C-Mount

#### Frame Format

BMP, TIF, DNG, JPG or AVI file format

#### Camera / PC Interface

1000/100 Ethernet interface (Gigabit Ethernet)

#### Phase Lock

Multiple cameras can be synchronized to a master camera or to an external source

#### Trigger

Contact closure, external TTL signal or software trigger (ImageBLITZ® Auto Trigger)

#### Camera Size

63mm H x 63mm W x 65mm D with C-Mount lens.

63mm H x 63mm W x 92.5mm D with F-Mount lens

#### Camera Weight

.28 kg. without lens

#### Operating Environment

+5° to +35°C (to +45° with cooling option)

#### Power Supply

10 - 30V DC external power supply

#### Power Consumption

7.5W maximum

### Software Specifications

#### Camera Control Software

HiSpec Director 2 software for Windows 7/ Vista / XP

#### Image Amplification

Digital gain from 1 to 4 in 8 steps

#### Optional SDK

GiGE Vision compatible 

### Options Available

#### Memory

4GB

#### Auto Trigger

ImageBLITZ®

#### Multi-Sequence Record Mode

2, 4, 8 or 16 individual recording partitions

### Sample Frame Rates and Resolutions

| Maximum Frame Rate | Resolution | 2GB Standard                        |              | 4GB Option                          |              |
|--------------------|------------|-------------------------------------|--------------|-------------------------------------|--------------|
|                    |            | Recording Time @ Maximum Frame Rate | Total Frames | Recording Time @ Maximum Frame Rate | Total Frames |
| 250 fps            | 320 x 240  | 111.84 sec.                         | 27,960       | 223.7 sec                           | 55,920       |
| 500 fps            | 320 x 240  | 55.92 sec.                          | 27,960       | 111.8 sec                           | 55,920       |
| 1,000 fps          | 320 x 240  | 27.96 sec.                          | 27,960       | 55.9 sec                            | 55,920       |
| 250 fps            | 704 x 528  | 23.1 sec.                           | 5,780        | 46.2 sec                            | 11,560       |
| 500 fps            | 704 x 528  | 11.6 sec.                           | 5,780        | 23.1 sec                            | 11,560       |
| 1,000 fps          | 704 x 528  | 5.8 sec                             | 5,780        | 11.6 sec                            | 11,560       |